

## X-TremeSeries

AUTO DRY CABINETS

**XL line-large** 1850lt.



**XT Line** 1250lt.



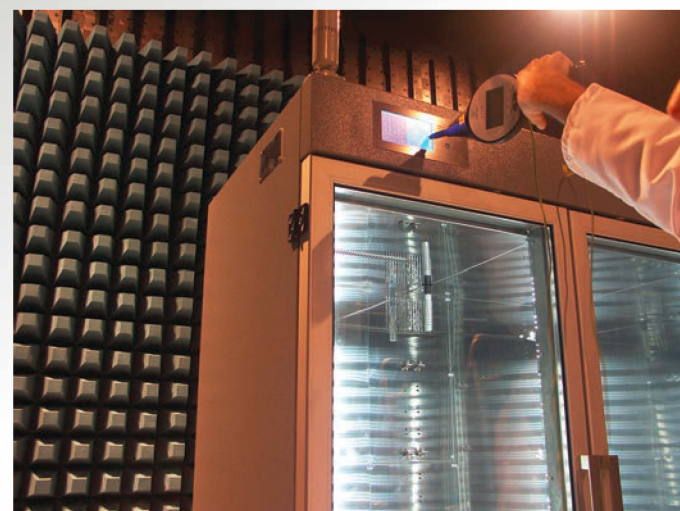
**XS 600** 600-900lt.



**XS 300** 300lt.



Other Sizes:	Net Volumes:
XS Line	Small 300-600-900Litres
XT Line	Standard 1250 Litres
XL Line	Large 1840 Litres



### Custom Design Option!

Various accessories including Dividers, SMD Reel holders, custom design sliding rail feeder storage solutions for standard or long depth feeders, from different manufacturers.

\*MIMOT, JUKI, ASSEMBLEON, SIEMENS

Custom Design of Shelf and Cabinet!  
Grounded Shelf and Body, prevent sensitive devices from electrostatic discharges.

We love to design cabinets to help our customers and their problems. Design your own cabinets!



Compliance with IPC/JEDEC-J-STD-0338.1 standards  
Compliance with CE and RoHS

- /NDEX
- 1- When double dryer unit is used
  - 2- When cooling unit is used
  - 3- When heating unit is used
  - 4- When humidifier unit is used

**smartTec**  
smart technology products and solutions

## X-TremeSeries

AUTO DRY CABINETS

The best solution for Drying,  
Baking & Storing of  
Moisture Sensitive Devices!

Internal Humidity Ratio  
**0.5%Rh - 95%Rh<sub>(4)</sub>**

Internal Temperature  
**15°C<sub>(2)</sub> - 60°C<sub>(3)</sub>**

### Unique dehumidification speed!

1%Rh<sub>(1)</sub> Humidity Ratio in 7 minutes.

Modern, Stylish and ergonomic design that appeal to the eye! Easy access to all settings and data with user friendly touch screen!

Air conditioning Options!

Drying&Storage of Moisture Sensitive Devices is getting more and more important.

With reliable design and leading specifications, X-Treme Series Auto Dry Cabinets are suitable for almost all dehumidification applications.



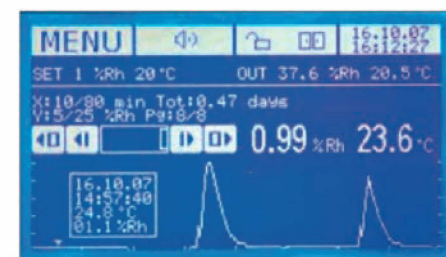


## Standard Properties:

Patented Dryer Technology offers Unique Ultra Fast Dehumidification -10 min2 compensates the affects of door opening to inside of cabinet. In spite of the high dehumidification capacity with developed engineering, cabinet presents low energy consumption. Confident for even hardest ambient and operating conditions.

Thermally insulated Double Glass of 22 mm thickness and Magnetic gaskets with perfect insulation on doors, are offered as standard. Double wall and isolated body, holds the temperature steady and provides energy savings. Completely operates silent! It doesn't make you restless.

Smart microcontroller software, easy operating menus with 128\*240 pixels large Touch Screen Graphics LCD panel and reliable control with user access codes. All user settings can be done in seconds



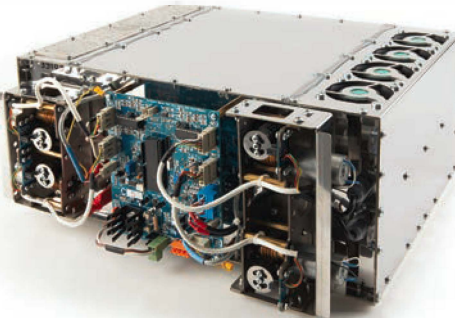
User can reach Rh% and temperature graphics at a glance.

**Real time** records, control of last 60 minutes.

Adjustable graphics view. Many features of the graphics view can be set by user. Horizontal time axis Span of the curve plotting can be set as Last 45 minutes minimum to Last 24 hours maximum starting any date time.

### Four door configuration

minimizes exposure to condition outside when any door is opened

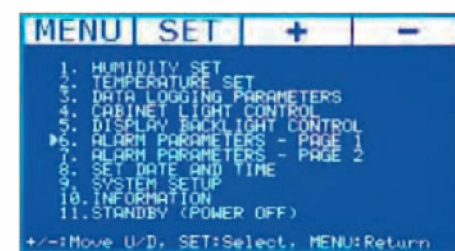


Robust Dehumidifier Structure, made of Stainless Steel allowing confidence even in the extremely humid areas, provides high capacity dehumidification but low energy consumption. Confident even in the hardest ambient and operating conditions.

With Error Diagnostic System, instant intervention to all errors. Temperature Level Alarm warns the user if the target temperature plus temperature offset value can not be reached when the time expired after a door close. If the cabinet can not reach to target temperature level after the door is closed, temperature level alarm warns user.

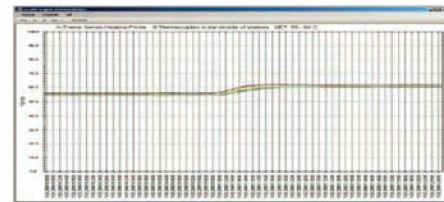
Humidity and temperature level alarms are offered as standard for all cabinets!

User can easily reach to all alarms from alarm history.



Isolated stainless steel panels provide hygiene and creates an aesthetic image. Interchangeable half size Stainless Steel Shelves make it easy to place devices in different size and provide endurance and rigidity.

### Homogeneity!



Heater Fans force Free Air Circulation through back air channels and provide even distribution of Humidity and Temperature throughout the cabinet. All electronics and mechanics are on the top section so that inner volume can be used effectively and completely. Net volume storage.



Access codes which are defined according to users provides reliable control and keep an eye on don't look back.

Protected by access code, programmable alarm parameters!

## Additional equipment-Accessories:

### Cabinet Lighting

Cabinet lighting and LCD backlight is controlled by motion sensor activation, display touch to screen and door opening with user defined timers longer display life with automated control!

### 15°C, 60°C Programmable Air Conditioning

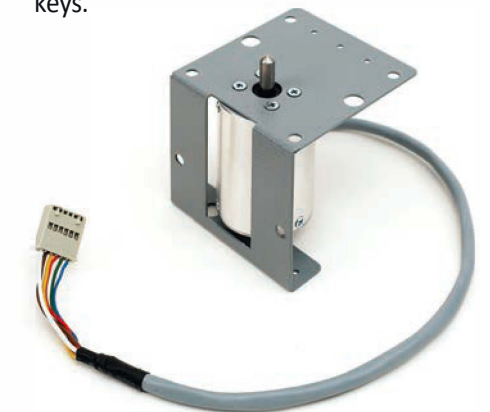
Double wall body, with 9mm insulation material and stainless steel panels, is offered as heater options providing excellent thermal isolation with its extremely low thermal conductivity value. 40°C, 60°C heating options, 15°C cooling option.

### HEPA (High Efficiency-Particulate Air) Filter

With high quality HEPA filters, the cabinet can be transformed into an Evidence Drying Cabinet or can be used for any purpose that requires protection from airborne particles and cross contamination. The cabinet can easily clean the ambient air and reach CLASS 10000 or ISO 7 standards.

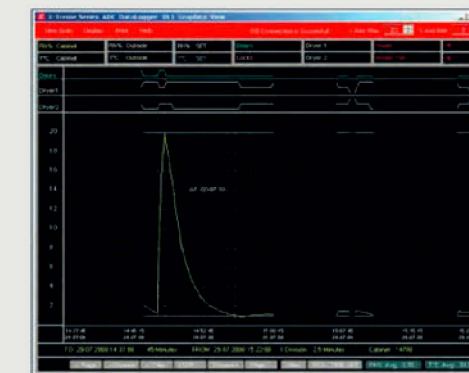
### Solenoid Lock

Access code operated, electronic controlled and hidden Automatic Door Locks are easy and practical protection against unauthorized door openings. No need to carry keys.



### Datalogger

Datalogger card with 4mb memory. 127,000 records, 15-30-45-60 second record intervals, 22 days to 90 days bundled with. Instant access to detailed analysis with easy understandable graphics and easy to use software.



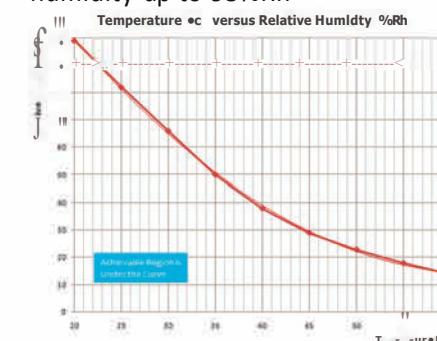
Impressions of the recorded data on the graphic

### USB Interface

PC imaging with USB interface! User can see Detailed Cabinet Data as Real Time or offline on the PC with whole Rh% and temperature values, database tables, curve plotting, measuring, averaging, dryer(s) and doors info etc. through to past. Scrolling towards the past time and back to present. Auto Play and Auto Scroll can be turned on/off.

### Humidification Option!

Humidification from ambient humidity up to 95%Rh



### Alarmbar

Outputs enable user to be aware of alarm conditions remotely with Alarm light bar

### Smart Nitrogen (N2) Unit

Ready to add optional Smart Nitrogen (N2) AutoFlow System, allowing use of both Standard Dryer and Nitrogena injection technologies together, compensates N2 failures and ensures fall safe reliable operation.

### Double Dehumudification Unit

With double dehumudification option 1%Rh in 7 minutes.

### Outdoor Sensor

User can monitor the humidity and temperature inside the cabinet and outdoor values with optional outdoor sensor for a period of time at a glance. Know the ambient conditions.

### Reel Holder

