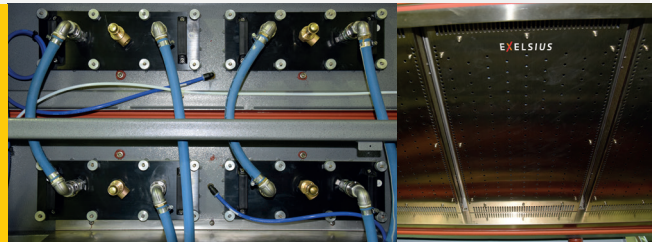


**A new
generation
of reflow
ovens for
optimized
performances
and total cost
of ownership**



KEY FEATURES AND BENEFITS

- Easier access for maintenance
- Shortened cleaning time
- Improved thermal insulation
- Management of energy consumption
- Management of production data
- Open operating system allowing :
 - Remote control of production lines
 - Easy connection to any MES
- Modern, intuitive and customizable user interface
- Minimized operating cost



COOLING

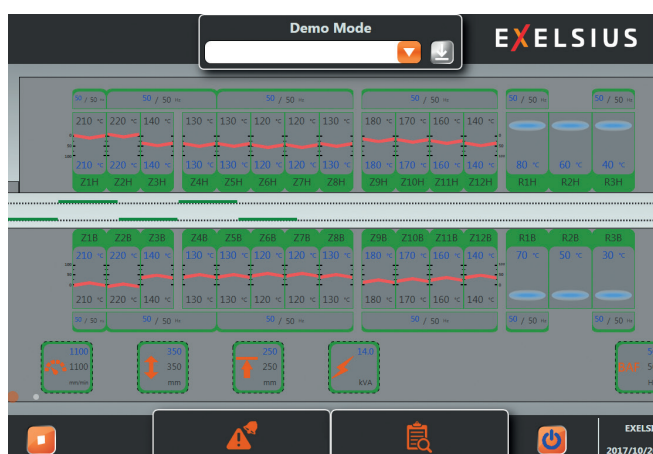
Cooling is realized on 2 or 3 zones with top and bottom convection modules to meet not only solder paste but also most sensitive components requirements.

HEATING

With longer heating lengths and unequalled thermal transfer efficiency enhanced by a better convection, the XRC series offers a large flexibility and a better control of temperature profiles. It allows to improve thermal uniformity and to significantly reduce stress on complex assemblies.

SPECIFICATIONS

	XRC 8	XRC 10	XRC 12
DIMENSIONS (mm)			
Total length	5425	6580	6580
Total width	1400	1400	1400
Height (without beacon)	1500	1500	1500
CONVEYOR			
Pin chain	standard		
Central support	option		
Belt	option		
Combo (pin chain + belt)	option		
HEATING TUNNEL			
Heating length	3310	4100	4100
Heating zones : Top / Bottom	8/8	10/10	12/12
Heating time	20 to 30 min		
THERMAL REGULATION			
Maximum temperature	350°C		
Precision	+/-0,5°C		
Regulation mode	PID		
COOLING			
Active cooling length (mm)	800	1200	1200
Cooling zones : Top / Bottom	2/2	3/3	3/3
Total cooling length (mm)	1300	1680	1680
FACILITIES			
Voltage	400 V AC		
Frequency	50/60 Hz		
Phases	3 + N + G		
Power rating (kW)	67	83	91
Weight (Kg)	2500	3100	3200



CONTROL & REGULATION

- Operating system: Windows 10
- Siemens PLC
- Access controlled by password
- Automatic start-up
- In line assistance
- Alarms log data
- Maintenance warning
- Power consumption

These specifications are not contractual