

Best Solution & Service for you
SJT SJ INNO TECH
Vision Screen Printer

High Performance **VISION SCREEN PRINTER**

HP-520S
HP-620S
HP-760S



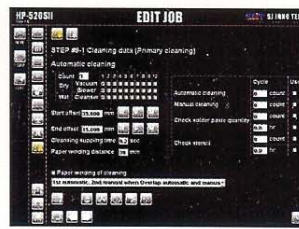
ISO9001
ISO14001

 **INNO-BIZ Corporation**
 **Venture Business**

 **Promising Export Company**
 **Leading Medium Business**



○ User Interface



- Black & White UI Adoption
- Simple Operation
- Various Information Display
- Convenient Model Change Interface

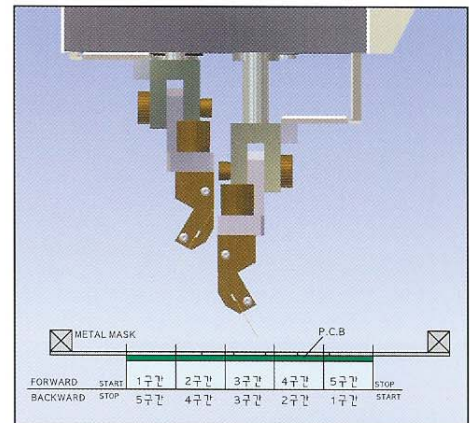
○ Pressure and Speed Control by each Section

HP-520SII EDIT JOB

STEP #8-2 Squeeze data (Extend mode)

Section	Forward				Backward			
	Position mm	Pressure kgf	Speed mm/sec	Position Check	Position mm	Pressure kgf	Speed mm/sec	Position Check
#1	0.000	0.0	50	Move	0.000	0.0	50	Move
#2	0.000	0.0	50	Move	0.000	0.0	50	Move
#3	0.000	0.0	50	Move	0.000	0.0	50	Move
#4	0.000	0.0	50	Move	0.000	0.0	50	Move
#5	91.000	0.0	50	Move	91.000	0.0	50	Move
Board Width	91.000 mm				91.000 mm			

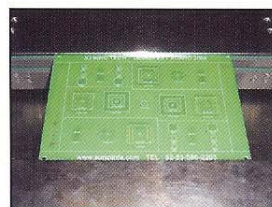
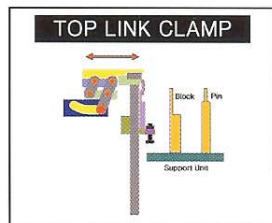
Distance of position is distance from board edge



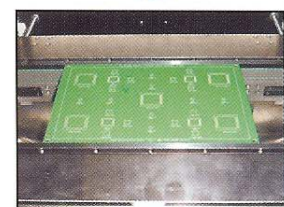
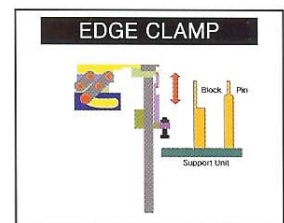
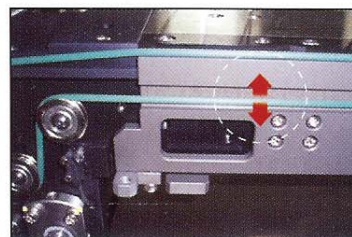
- Digital Controlling for Speed and Pressure of Squeegee up to 5 Stages in each Printing Section
- Realization of High Productivity and High Quality Precision

Patent Registration No.:10-0505314

○ PCB Clamping



Upward of 0.8t PCB, Prevention of EDGE Guide Damage



Downward of 0.8t PCB, Prevention of Y axis Secession at the time of Clamping

Patent Registration No.:10-0505315

www.sjinnotech.com
HP-520S
HP-620S



Auto Under Stencil Cleaning

Epoch-Making Improvement of Cleaning Efficiency.

- Vacuum and Cleaning unit of Dual Structure
- User's Convenient Optional Function : Alcohol, Vacuum, Blown
- Assignment of Human Cleaning Function
- Assignment of Random Cleaning Time

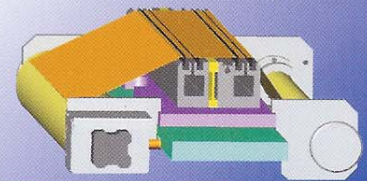
Patent Registration No.:10-0631156

Patent Registration No.:10-0843782



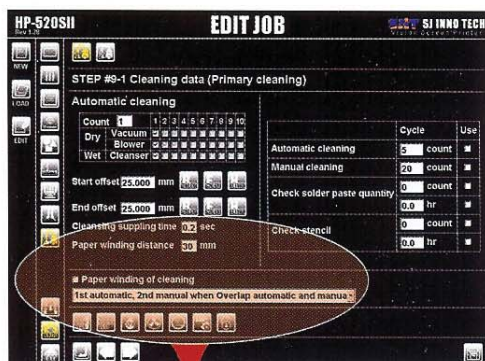
2-VACUUM UNIT & Paper Rolling Unit

Improvement of Quality by elevation of Mask opening point
Solder remain due to revolve Roll paper simultaneously at the time of Mask Cleaning

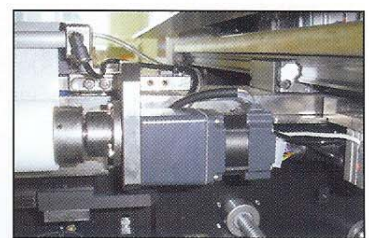
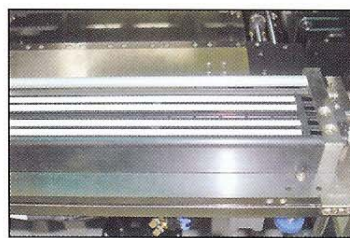


Effectiveness of 4 times
Cleaning by way of One Time Returning

Paper Winding Cleaning



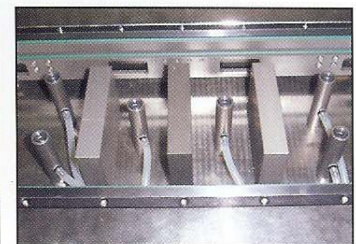
Special Cleaning



Doubled Cleaning Ability Improvement by Revolution of Roll Paper at the time of Cleaning and Realization of Quality Improvement by One-time Cleaning without Return Cycle

Worker's Convenience Pursuit

- Improvement of lead fall by way of Multi-Fly Separation
- Alteration of Convenient Stencil Size used LM Guide
- Mark Realization Function Improvement by way of Highly Efficient Digital Camera
- Conveyor Automatic Width Control(Step Motor Control)
- Table Automatic Up/Down Unit Regardless of unrelated to 't' Size Change
- Various Board Back Up Unit(Block, Pin etc)

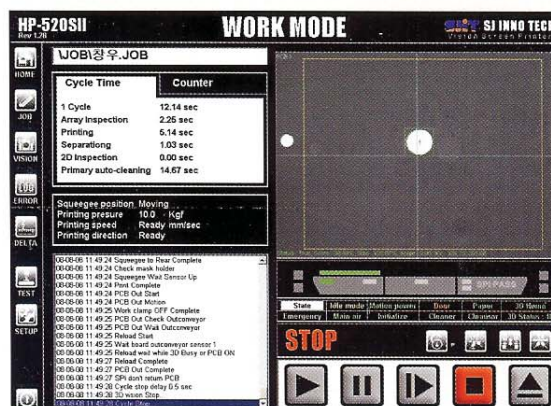


Cycle Time

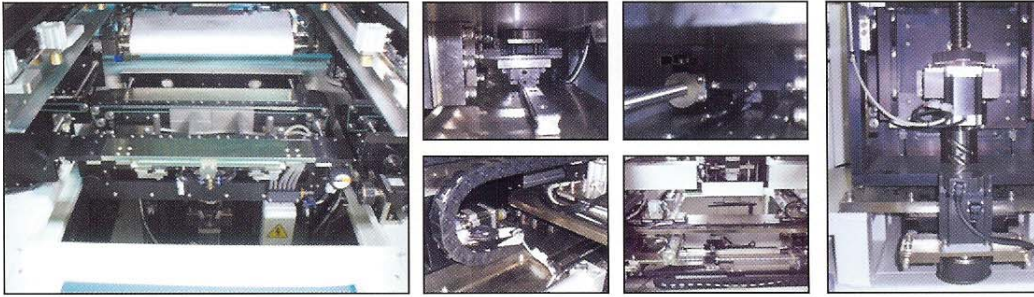
Work Up Down and Stencil align Structure, Digital Video Image and Treatment Real-Production Cycle Time Improvement by New Software

Cycle Time	Counter
1 Cycle	12.14 sec
Array Inspection	2.25 sec
Printing	5.14 sec
Separation	1.03 sec
2D Inspection	0.00 sec
Primary auto-cleaning	14.67 sec

PCB Size : 200×200mm Standard
Real Production Cycle Time 13sec(Screen Printing)



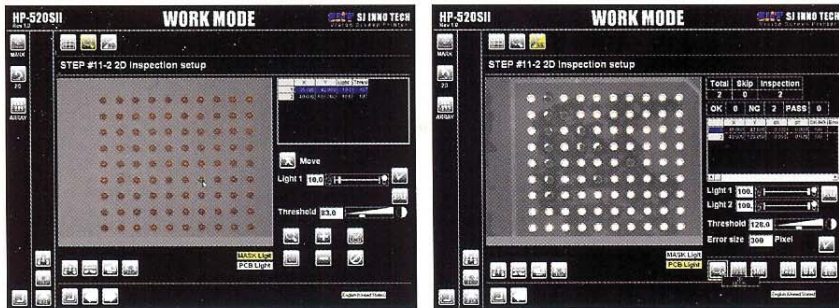
Auto Aligning



- Auto Stencil Position
- All Axis Auto Align by One Time Click
- Excellent Operation Auto Positioning by Adoption of Mitsubishi Servo System
- Operation Without Special Teaching after Existing Work Program Loading

2D Inspection

All Position Inspection by Created Error Size(Pixel Size Input), NG Display even if one part of Pattern Error Caused.

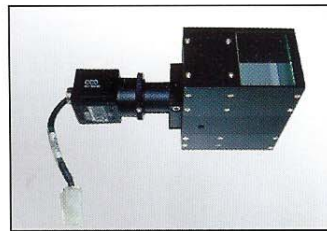
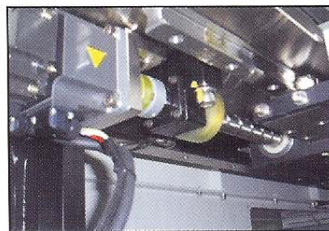
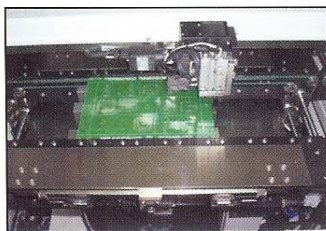
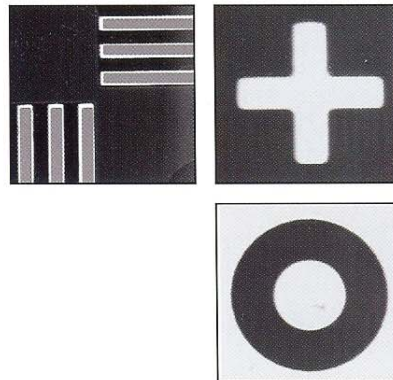


- Green line & Yellow line: OK Position
(Yellow : Insufficient or missing)
- Red Line: NG Position or Missing



Vision System

- 256 Gray Scale Image
- Grabber Internal Type of Digital CCD
 - Vision Data Treatment Improvement
 - Vision System Internal Type
 - Coaxial Image Recognition of 3 Colors, 4 Channels illumination
 - Programmable lighting
 - FOV 11 × 8mm
 - Fiducial Finder
 - Inspection
 - All Mark Recognition Without Relation to Shape by No Library Adoption
- XY Servo System
 - Closed loop
 - Optical



New Technology High Performance Vision Screen Printer
HP-520S

SJ INNO TECH
Vision Screen Printer

○ Specification

	HP-520S	HP-620S
Screen Frame	Specification	Specification
Mask Size	600L×550W, 650L×550W, 736L×736W	736L×736W, 800L×800W
Mask Origin	Center, Front	
PCB Application	Specification	
PCB Size	50L×50W ~ 520L×420W	50L×50W ~ 620L×480W
PCB Thickness	Min 0.4mm ~ Max 4.0mm	
PCB Clamp	Dual way of Edge Guide and Top Guide Clamp	
PCB Support Method	Magnetic Support Pin & Block, Vacuum Pin etc	
PCB Transfer	Specification	
Conveyor Width Adjustment	Automatic(Standard)	
PCB Transfer Way	Left to Right or Right to Left	
Transfer Height From Floor	900±30mm	
Transfer Base	Front Fixed(Standard)	
Vision Parameter	Specification	
Vision Camera	Grabber Internal Type Digital Camera IEEE1394 Interfaces	
Vision Board	Treated Vision Data Convey to PC in the Digital Camera	
Illumination Method	Excellent R.G.B 3Channels Indirect Illumination, Regardless of Marks Site and Quality of the Material	
Vision Processing Method	Real-time Image Transmission by use of 256 Gray Scale	
Fiducials Type	All Kinds of Fiducial Mark Recognition	
Fiducials	0, 1, 2	
Vision Printing	Specification	
Printing Direction	Front ⇄ Rear	
Squeegee Type	Speciality Heat Treatment Coating Metal Squeegee	
Squeegee Speed	2 ~ 150mm/sec	
Squeegee Pressure	1 ~ 25Kgf	1 ~ 40Kgf
Print Speed & Pressure Contra	Digital Control for Speed and Pressure of Squeegee by each working section	
Snap off Distance	0 ~ 5.0mm (Inc 0.01mm)	
Separate Speed	1 ~ 150mm/s (Inc 0.01mm/s)	
Separate Way	0 ~ 20mm (Inc 0.01mm)	
Cycle Time	8sec+Printing Time	10sec+Printing Time
Accuracy	±0.015mm	
Repeatability	±0.01mm	
Cleaning Unit	Specification	
Clean Type	Wet, Vacuum, Blower, Random Assignment, Winding Clean	
Other	Specification	
Monitor	TFT-LCD 17"	
Power Requirements	AC220V(50/60Hz)×2.2Kw	AC220V(50/60Hz)×2.5Kw
Air Supply Requirements	5.0Kg/cm ² , 40NL/Min	
Dimension(L×W×H)	1,567(L)×1,590(W)×1,445(H)	1,650(L)×1,650(W)×1,445(H)
Approx. Weight	1,200Kg	1,400Kg

SPECIFICATIONS of HP-760S:

PCB MAXIMUM APPLICATION SIZE (PCB Size : 760×600mm)



HP-520S
New Technology
High Performance
Vision Screen Printer